



EASTERN IDAHO FIRE CHIEFS ASSOCIATION 2024 ANNUAL OPERATING PLAN

This document serves as an addendum to the Eastern Idaho Fire Chiefs Association Constitution and Bylaws (EIFCA) and the Eastern Idaho Fire Chiefs Mutual Aid Agreement and all who are party to the agreement within the Eastern Idaho area. In addition, all fire agencies within the boundary of the Eastern Idaho Fire Chiefs Association area, regardless of being party to any agreement, are invited to be participants to this Operating Plan.

This Operating Plan shall be prepared annually to update and define specific procedures and any changes that may arise while engaging “All-Hazard” incidents. All agencies, in good faith will, in their best efforts, operate within the guidelines of this document.

The sole purpose of this document is to increase safety and coordination during interagency incidents and is the opinion of each entity party to this operating plan that following the guidelines of this document will: increase safety, enhance communications, establish minimum training qualifications, establish minimum personal protective equipment, and establish apparatus minimum standards.

This document in no way supersedes the federal “Annual Operating Plan for Mutual Fire Aid” or any other agreement between agencies, the Bureau of Land Management-Idaho Falls District and/or the Caribou-Targhee National Forest; but is to be used as a guidance document for operations. All agencies are to operate under their signed mutual aid agreements and use this document as an operating plan.

This Operating Plan is for “All-Hazard” incidents, however, due to the frequency and potential magnitude of wildland fires, heavy emphasis is placed on wildland fire operations.

Table of Contents

MINIMUM QUALIFICATION STANDARDS.....	3
MINIMUM PERSONAL PROTECTIVE EQUIPMENT REQUIREMENTS.....	3
MINIMUM EQUIPMENT REQUIREMENTS.....	4
EIFCA COMMUNICATIONS PLAN.....	6
EIFCA/MUTUAL AID FIRE CALL-OUT PROCEDURES.....	7
EASTERN IDAHO FIRE CHIEFS ASSOCIATION.....	8
MUTUAL AID REQUEST FORM - 2024	8
ALPINE FIRE DISTRICT – PERSONNEL & RADIO LIST	Error! Bookmark not defined.
ARCO FIRE DEPT. – PERSONNEL & RADIO LIST	Error! Bookmark not defined.
BLACKFOOT FIRE DEPT. – PERSONNEL & RADIO LIST	Error! Bookmark not defined.
BONNEVILLE COUNTY FIRE DISTRICT #1 – PERSONNEL & RADIO LIST	Error! Bookmark not defined.
BONNEVILLE COUNTY FIRE DISTRICT #1—AMMON DIVISION – PERSONNEL & RADIO LIST ..	Error! Bookmark not defined.
BUREAU OF LAND MANAGEMENT (BLM) – PERSONNEL & RADIO LIST	Error! Bookmark not defined.
CAMAS CREEK RFPA – PERSONNEL & RADIO LIST	Error! Bookmark not defined.
CENTRAL FIRE DISTRICT (JEFFERSON) – PERSONNEL & RADIO LIST	Error! Bookmark not defined.
CLARK COUNTY FIRE DEPT. – PERSONNEL & RADIO LIST	Error! Bookmark not defined.
FOREST SERVICE (FS) – PERSONNEL & RADIO LIST	Error! Bookmark not defined.
HAMER FIRE DEPT. – PERSONNEL & RADIO LIST	Error! Bookmark not defined.
HENRY’S CREEK RFPA – PERSONNEL & RADIO LIST	Error! Bookmark not defined.
IDAHO DEPARTMENT OF LANDS (IDL) – PERSONNEL & RADIO LIST	Error! Bookmark not defined.
IDAHO FALLS FIRE DEPT. – PERSONNEL & RADIO LIST	Error! Bookmark not defined.
INL FIRE DEPT. – PERSONNEL & RADIO LIST	Error! Bookmark not defined.
ISLAND PARK FIRE DISTRICT – PERSONNEL & RADIO LIST	Error! Bookmark not defined.
MADISON FIRE DEPT. – PERSONNEL & RADIO LIST	Error! Bookmark not defined.
NORTH FREMONT FIRE DISTRICT – PERSONNEL & RADIO LIST	Error! Bookmark not defined.
ROBERTS FIRE DEPT. – PERSONNEL & RADIO LIST.....	Error! Bookmark not defined.
SHELLEY FIRTH RURAL FIRE DISTRICT – PERSONNEL & RADIO LIST	Error! Bookmark not defined.
SOUTH FREMONT FIRE DISTRICT – PERSONNEL & RADIO LIST	Error! Bookmark not defined.
SWAN VALLEY – PERSONNEL & RADIO LIST.....	Error! Bookmark not defined.
TETON COUNTY FIRE DISTRICT – PERSONNEL & RADIO LIST.....	Error! Bookmark not defined.
UCON FIRE DEPT. – PERSONNEL & RADIO LIST.....	Error! Bookmark not defined.
WEST JEFFERSON FIRE CONTROL DISTRICT – PERSONNEL & RADIO LIST	Error! Bookmark not defined.
Appendix A – 700 Radio Plan	9
Appendix B – Federal Agency Frequency Plan.....	10
Appendix D – USIWG Incident Management Considerations	13
Appendix E – Initial Attack Fire Size-Up.....	14

MINIMUM QUALIFICATION STANDARDS

Training and Qualifications: It is recognized and agreed upon that the ultimate goal of EIFCA is that all agencies work toward meeting the training and qualification requirements and standards set forth by the International Fire Services Accreditation Congress (IFSAC), the National Wildfire Coordinating Group (NWCG and PMS 310-1) and the Idaho State Emergency Medical Services Bureau (ISEMSB). All responders should also complete I-100 and I-700 for familiarization with the Incident Command System.

Structural Fire Training and Qualifications: The goal of EIFCA is to have all agencies meet the training and qualification standards set forth by the state of Idaho, or the equivalent, with Structural Firefighter I and HazMat Operations as a minimum. Firefighters are to complete the Arduous Work Capacity Test (the Pack Test) or Physical Agility Test equivalent to the Combat Challenge.

Wildland Fire Training and Qualifications: The goal of EIFCA is to have all agencies meet the training and qualification requirements and standards set forth by NWCG and PMS 310-1. As a minimum, S-130, L-180 and S-190 are to be obtained for each firefighter as well as completing the Arduous Work Capacity Test (the Pack Test).

Emergency Medical Services: All agencies providing Emergency Medical Services to an incident will ensure they are current in licensure with the ISEMSB and operating at a level commensurate with their level of training and licensure.

Response Qualification Expectation: Once declared a “Mutual Aid Incident,” a unified command structure will be set up for the management of the incident. During the initial attack phase of the operation, all agencies, (federal, state, local and tribal) will accept each other’s standards with regards to training and qualifications. *(For the purposes of this agreement, initial attack is generally defined as the first operational period when mutual aid may typically occur.)* Once jurisdiction is clearly established and the incident extends beyond initial attack, the standards of the agency(s) with jurisdiction will prevail. Any agency not meeting required standards for training and qualifications of the jurisdictional agency beyond the initial attack phase of the incident will be released from the incident or reassigned to other duties commensurate with their training and qualifications. Personnel from agencies that do not prescribe to the above standards may be used at the Incident Commander’s discretion. In all instances, Incident Commanders must ensure that all personnel and equipment resources are only assigned to duties commensurate with their competencies, agency qualifications, and equipment capabilities. Personnel must let the Incident Commander know if they are not qualified or do not have the experience to safely carry out an assignment. Safety is our first priority.

MINIMUM PERSONAL PROTECTIVE EQUIPMENT REQUIREMENTS

Personal Protective Equipment (PPE): All responders will wear appropriate PPE for the assignments which they accept. This includes EMS, wildland fire, structural fire and HazMat. For wildland fire, this includes fire-resistant pants and shirt, hard hat with chin strap, leather gloves,

fire shelter and leather boots. Chaps, and hearing and eye protection are also recommended as needed. Personnel not properly equipped with appropriate PPE will be released from engagement and will be reassigned to other support functions or released from the incident.

MINIMUM EQUIPMENT REQUIREMENTS

Engine Typing and Equipment Standards: EIFCA agencies will, to the best of their ability, equip their apparatus according to the Idaho Surveying and Rating Bureau, IFSAC, ISEMSB and NWCG recommendations and standards. Agencies will “Type” their equipment according to FEMA and NWCG standards. Minimum standards for personnel, equipment, and capacities will be met consistent with the typing charts located in the Interagency Standards for Fire and Fire Aviation Operation (Red Book) listed below. Resources are to be self-sufficient for 24 hours, i.e., MREs, drinking water, etc.

Engine Type	Structure		Wildland Engines				
Components	1	2	3	4	5	6	7
Tank Minimum Capacity (gal)	300	300	500	750	400	150	50
Pump Minimum Flow (GPM)	1000	500	150	50	50	50	10
@ Rated Pressure (PSI)	150	150	250	100	100	100	100
Hose 2½”	1200	1000	-	-	-	-	-
Hose 1½”	500	500	1000	300	300	300	-
Hose 1”	-	-	500	300	300	300	200
Ladders (per NFPA 1901)	Yes	Yes	-	-	-	-	-
Master Stream 500 GPM (minimum)	Yes	-	-	-	-	-	-
Pump and Roll	-	-	Yes	Yes	Yes	Yes	Yes
Maximum GVWR (lbs.)	-	-	-	-	26,000	19,500	14,000
Personnel (NWCG minimum)	4	3	3	2	2	2	2

Water Tender Type	Support			Tactical	
Requirements	S1	S2	S3	T1	T2
Tank Capacity (gal)	4000	2500	1000	2000	1000
Pump Minimum Flow (GPM)	300	200	200	250	250
@Rated Pressure (PSI)	50	50	50	150	150
Maximum Refill Time (mins)	30	20	15	-	-
Pump and Roll	-	-	-	Yes	Yes
Personnel (min)	1	1	1	2	2

Additionally, all EIFCA agencies will attempt to equip their wildland engines and apparatus consistent with the recommended engine equipment list located in Interagency Standards for Fire and Fire Aviation Operation (Red Book) listed below. This will provide standardization regarding hose size, threads and fittings.

Category	Item Description	NFES #	Type	
			3, 4, & 5	6
<i>Fire Tools & Equip</i>	McLeod	0296		1
	Combination Tool	1180	1	1
	Shovel	0171	3	2
	Pulaski	0146	3	2
	Backpack Pump	1149	3	2
	Fusees (case)	0105	1	½
	Foam, concentrate, Class A (5-gallon)	1145	1	1
	Chainsaw (and chaps)		1	1
	Chainsaw Tool Kit	0342	1	1
	Drip Torch	0241	2	1
	Portable Pump		*	*
<i>Medical</i>	First Aid Kit, 10-person	1143	1	1
	Burn Kit		1	1
	Body Fluids Barrier Kit	0640	1	1
<i>General Supplies</i>	Flashlight, general service	0069	1	1
	Chock Blocks		1	1
	Tow Chain or Cable	1856	1	1
	Jack, hydraulic (comply w/GVW)		1	1
	Lug Wrench		1	1
	Pliers, fence		1	1
	Food (48-hour supply)	1842	1	1
	Rags	3309	*	*
	Rope/Cord (feet)		50	50
	Sheeting, plastic, 10' x 20'	1287	1	1
	Tape, duct	0071	1	1
	Tape, filament (roll)	0222	2	2
	Water (gallon/person) minimum		2	2
	Bolt Cutters		1	1
	Toilet Paper (roll)	0142	*	*
	Cooler or Ice Chest	0557	*	*
	<i>General Supplies</i>	Hand Primer, Mark III	0145	*
Hose Clamp		0046	2	1
Gaskets (set)			1	1
Pail, collapsible		0141	1	1
Hose Reel Crank			*	*

EIFCA COMMUNICATIONS PLAN

Purpose: Ensure interagency communications during non-routine multi-agency incidents.

Responsibilities: Dispatcher, Command, Responders

Guidance: Each County that uses 700 MHz radios will program into their 700 radios the “EIFCA 700 Channel Plan” as outlined in Appendix A in this document. There will be a “North Plan” that primarily uses the Tait system and there will be a “South Plan” that will primarily use the state Motorola system.

For agencies with VHF radio ability, the “Eastern Idaho Interagency Fire Center Initial Attack Plan” (EIIFC) will be used. This is Group 19 in the EIIFC plan. Other VHF needs will need to be coordinated between commonly used mutual aid agencies.

During a multi-agency response, the dispatch along with the IC will decide which channels will be used on that incident. All units responding to the incident will need to contact the responsible dispatch to find out what channels the incident has been assigned.

The requesting dispatch will notify all agencies currently operating or responding to the incident of the operating radio channel(s). All agencies will report to command or staging via the assigned channel. When requesting mutual aid resources from other EIFCA agencies, the requesting dispatch will provide the assisting agency with: incident nature, resource request, Incident Command Post and Staging area location(s) and the radio channel(s) the incident is operating on. Responding agencies will provide the requesting dispatch an estimated time of arrival.

Apparatus Identification/Naming Convention: To standardize the identification of apparatus, the following five-character unit identifier should be used:

Example: Teton E611 (Pronounced: Teton E Six Eleven)

First Identifier: Name of Department (Teton)
Second Identifier: Engine, Tender etc. (E-Engine)
Third Identifier: Typing of apparatus (1-7) (Type 6)
Fourth Identifier: Station Number (Station One)
Fifth Identifier: Number of that type of apparatus at that station (First Engine of that type at that station)

A four-character unit identifier can also be used. The second number becomes the number of that type of apparatus. No station number is used. Example: Teton E62 = Type 6 engine and the second one of its type.

EIFCA/MUTUAL AID FIRE CALL-OUT PROCEDURES

WHEN ANY EIFCA AGENCY RECEIVES A SMOKE REPORT NEAR ANY JURISDICTIONAL BOUNDARIES BETWEEN AGENCIES AND RESOURCES ARE SENT, THE RESPECTIVE DISPATCH CENTERS WILL BE CONTACTED WITH THE LOCATION OF THE REPORT AND RESOURCES THAT WERE SENT.

Upon confirmation of a wildland fire, the Incident Commander or initial responding units will decide if further assistance is needed from EIFCA agencies. In general, err on the side of caution and order adequate resources to ensure prompt control and suppression of wildfires. If a mutual aid fire is declared the following steps will be taken:

1. A mutual aid fire is declared by the Incident Commander of an incident by calling their respective dispatch center with an estimate of resource needs by resource type and total numbers needed by type.
2. The Incident Commander will designate a Staging Area and Staging Area Manager for all incoming resources to report to for check-in, briefing and assignment prior to engaging the fire. Depending on the situation, the Incident Command Post and Staging area may be in the same or different locations.
3. Madison County Dispatch (208) 372-5001 is the primary dispatch to contact for mutual aid requests IF your dispatch needs assistance. Jefferson County Dispatch (208) 745-9210 will be a backup to Madison. The following information will need to be exchanged:
 - a. Incident Name
 - b. Incident Commander
 - c. Staging area location and contact
 - d. Frequency to be used
 - e. Number and type of resources that the IC is requesting (are additional Overhead needed to manage ordered resources?)
 - f. Identify best route to staging area
 - g. If needed, identify a time to meet in the staging area
 - h. Notify the requested resource if they will be performing Initial Attack
4. Resources are most efficiently ordered by using the traditional means of paging the resource out through the approved dispatching procedures of each entity. Calling neighboring Chiefs one at a time is not efficient and is not recommended.
5. The responsible dispatch center will confirm with the Incident Commander the number and type of resources en route from each unit and their ETAs to the incident staging area.
6. If the fire is entirely within the jurisdiction of one agency, that agency will retain overall command of the incident. However, due to communications issues with different frequency bands being used between agencies, mutual aid fires are managed similar to a unified command situation. A command representative of each agency involved may need to remain at ICP or travel together to maintain communications between all agencies and resources.
7. See Appendix D for additional incident considerations.



**EASTERN IDAHO FIRE CHIEFS ASSOCIATION
MUTUAL AID REQUEST FORM - 2024**

Madison Dispatch: (208) 372-5001 (Primary EIFCA Dispatch)
Jefferson Dispatch: (208) 745-9210 (Secondary EIFCA Dispatch)

Incident Information	
Incident Name:	Incident Commander:
Staging Area Address/Location:	
Staging Area Contact Name and Number:	
Time needed:	
Command 700 Zone & Channel:	Tactical 700 Zone & Channel:
Command VHF Frequency:	Tactical VHF Frequency:
Initial Attack? Yes or No	Land Ownership: Private or Federal

Rapid Resource Request					
Task Force of Wildland Engines			Task Force of Structure Engines		
Type	Filled By	ETA Staging	Type	Filled By	ETA Staging
Eng # _____			Eng # _____		
Eng # _____			Eng # _____		
Eng # _____			Eng # _____		
Eng # _____			Eng # _____		
Eng # _____			Eng # _____		
Water Tender			Water Tender		
Overhead			Overhead		
Name/Cell:			Name/Cell:		
Overhead			Overhead		
Name/Cell:			Name/Cell:		

Overhead = Leadership

Rapid Resource Request - Other					
Task Force of Law Enforcement Officers			Other: EMS, Ladder Truck, Light Tower, etc.		
Type	Filled By	ETA Staging	Type	Filled By	ETA Staging
LEO					
LEO					
LEO					
LEO					
LEO					
Overhead			Overhead		
Name/Cell:			Name/Cell:		
Overhead			Overhead		
Name/Cell:			Name/Cell:		

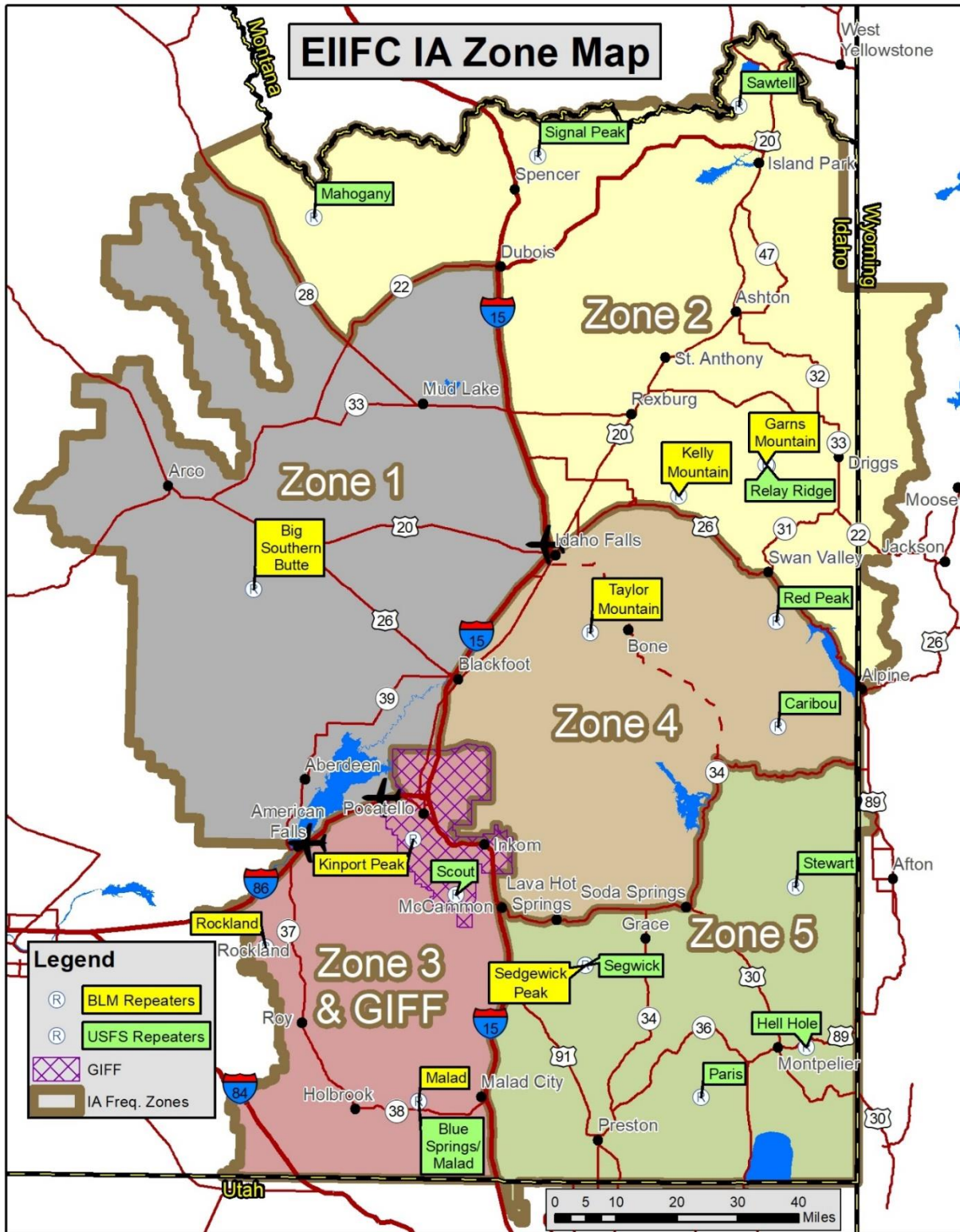
Appendix A – 700 Radio Plan

EIFCA NORTH	EIFCA SOUTH
Zone W	Zone X
W1 Home Main	X1 Home Main
W2 Event 1	X2 Event 1
W3 Tac 1	X3 Tac 1
W4 Event 2	X4 Event 2
W5 Tac 2	X5 Tac 2
W6 Event 3	X6 Event 3
W7 Tac 3	X7 Tac 3
W8 Event 4	X8 Event 4
W9 Tac 4	X9 Tac 4
W10 8-Cal90d	X10 8-Cal90d
W11 7-Cal50d	X11 7-Cal50d
W12 Event 5	X12 Event 5
W13 Tac 5	X13 Tac 5
W14 Event 6	X14 Event 6
W15 Tac 6	X15 Tac 6
W16 Home Main	X16 Home Main

AFT

Bonneville-8B	Jefferson-1J	Madison-1M	Teton-1T	Fremont-2F	Clark-5C	INL
Zone Q	Zone R	Zone S & C	Zone T	Zone U	Zone V	Zone Y
Q1 1M-Fire	R1 1M-Fire	S1 1M-Fire	T1 1M-Fire	U1 1M-Fire	V1 1M-Fire	Y1 1M-Fire
Q2 8B-E1	R2 1J-E1	S2 1M-E1	T2 1T-LawT1	U2 2F-E1	V2 5C-E1	Y2 INL-E1
Q3 8B-d1	R3 1J-d1	S3 1M-d1	T3 1T-EMS1	U3 2F-d1	V3 5C-d1	Y3 INL-d1
Q4 8B-E2	R4 1J-E2	S4 1M-E2	T4 1T-EmsT1	U4 2F-E2	V4 5C-E2	Y4 INL-E2
Q5 8B-d2	R5 1J-d2	S5 1M-d2	T5 1T-FDcmd	U5 2F-d2	V5 5C-d2	Y5 INL-d2
Q6 8B-E3	R6 1J-E3	S6 1M-E3	T6 1T-FireT1	U6 2F-E3	V6 5C-E3	Y6 INL-E3
Q7 8B-d3	R7 1J-d3	S7 1M-d3	T7 1T-FireT2	U7 2F-d3	V7 5C-d3	Y7 INL-d3
Q8 8B-E4	R8 1J-E4	S8 1M-E4	T8 1T-FireT3	U8 2F-E4	V8 5C-E4	Y8 INL-E4
Q9 8B-d4	R9 1J-d4	S9 1M-d4	T9 1T-FireT4	U9 2F-d4	V9 5C-d4	Y9 INL-d4
Q10 8-Cal90d	R10 8-Cal90d	S10 8-Cal90d	T10 8-Cal90	U10 8-Cal90d	V10 8-Cal90d	Y10 8-Cal90d
Q11 7-Cal50d	R11 7-Cal50d	S11 7-Cal50d	T11 1T-OPS1	U11 7-Cal50d	V11 7-Cal50d	Y11 7-Cal50d
Q12 8B-E5	R12 1J-E5	S12 1M-E5	T12 1T-OPS2	U12 2F-E5	V12 5C-E5	Y12 INL-E5
Q13 8B-d5	R13 1J-d5	S13 1M-d5	T13 1T-OPS3	U13 2F-d5	V13 5C-d5	Y13 INL-d5
Q14 8B-E6	R14 1J-E6	S14 1M-E6	T14 1T-OPS4	U14 2F-E6	V14 5C-E6	Y14 INL-E6
Q15 8B-d6	R15 1J-d6	S15 1M-d6	T15 1T-REG	U15 2F-d6	V15 5C-d6	Y15 INL-d6
Q16 1M-Fire	R16 1M-Fire	S16 1M-Fire	T16 1M-Fire	U16 1M-Fire	V16 1M-Fire	Y16 1M-Fire

Appendix B – Federal Agency Frequency Plan



Appendix B – continued

GROUP 19 – EIIFC IA					Tones: Set radio to desired command channel (CH 1 – 3) and press numbers 1 – 11 on keypad to enter desired repeater.		
CH	Label	Receive	Transmit	Transmit CG	BLM (Ch 1)	TAF (Ch 2)	CAF (Ch 3)
1	BLM CMD	169.7750	163.1500	100.0	Kinport	FS Portable 1	FS Portable 2
2	TAF CMD	170.5250	164.9875	107.2	Garns		Paris
3	CAF CMD	170.5500	164.9625	114.8	Big Butte/FF		Hells Hole
4	A/G 17	167.9875	167.9875	123.0	Taylor	Relay	Stewart
5	A/G 49	168.0375	168.0375	131.8	Sedgwick	Mahogany	Caribou
6	A/G IDL	151.1450	151.1450	141.3	Kelly	Spare	
7	FS TAC 1	167.3000	167.3000	151.4	Malad		
8	FS TAC 2	169.1750	169.1750	162.2	Rockland		
9	FS TAC 3	166.9875	166.9875	136.5		Signal	Scout
10	BLM TAC 1	172.7750	172.7750	146.2		Sawtell	Blue Springs
11	BLM TAC 3	168.6375	168.6375	167.9	Portable Rep	Red Peak	Sedgwick
12	BLM TAC 4	166.8000	166.8000				
13	LOGISTICS	163.1000	163.1000	For Flight Follow Transmit: Radio on CH 14 select tone 3 Transmit on local flight follow only in emergency.			
14	LOC FF	167.1500	163.1750				
15	EMS 2	155.2800	155.2800	156.7	For EMS 2: Radio on CH15 select tone 15 (EMS 2)		
16	AIR GUARD	168.6250	168.6250	110.9	For AIR GUARD: Radio on CH16 select tone 16		

Appendix C – Dispatch Information

AGENCY	DISPATCH	PHONE NUMBER
Alpine Fire District	Lincoln County Dispatch	(307) 885-5231
Ammon Fire Department	Bonneville County Dispatch	(208) 529-1200
Arco Fire Department	Butte County Dispatch	(208) 527-8553
Blackfoot Fire Department	Bingham County Communications Center	(208) 785-1234
BLM	Eastern Idaho Interagency Fire Center	(208) 524-7600 (208) 524-7604 (24-hr.)
Bonneville County Fire District #1	Bonneville County Dispatch	(208) 529-1200
Central Fire District (Jefferson)	Jefferson County Dispatch	(208) 745-9210
Clark County Fire Department	Clark County Dispatch	(208) 374-5403
Forest Service—Caribou-Targhee National Forest	Eastern Idaho Interagency Fire Center	(208) 524-7600 (208) 524-7604 (24-hr.)
Hamer Fire Department	Jefferson County Dispatch	(208) 745-9210
IDL	Eastern Idaho Interagency Fire Center	(208) 524-7600 (208) 524-7604 (24-hr.)
Idaho Falls Fire Department	Bonneville County Dispatch	(208) 529-1200
INL Fire Department	Fire Alarm and Emergency Dispatch Center	(208) 526-2212
Island Park Fire District	Fremont County Dispatch	(208) 624-4482
Madison Fire Department	Madison County Dispatch	(208) 372-5001
North Fremont Fire District	Fremont County Dispatch	(208) 624-4482
Roberts Fire Department	Jefferson County Dispatch	(208) 745-9210
Shelley Firth Fire Rural Fire District	Bingham County Communications Center	(208) 785-1234
South Fremont Fire District	Fremont County Dispatch	(208) 624-4482
Swan Valley (Bonneville County Fire District #2)	Bonneville County Dispatch	(208) 529-1200
Teton County Fire District	Teton County Dispatch	(208) 354-2323
Ucon Fire Department	Bonneville County Dispatch	(208) 529-1200
West Jefferson Fire Control District	Jefferson County Dispatch	(208) 745-9210

Appendix D – USIWG Incident Management Considerations

The intent of this checklist will provide the Incident Commander (IC) information to be aware of during an emerging incident and when there may be a need for other personnel (Agency Administrators, City/County Elected Officials, Bureau of Homeland Security, Fire Business Specialist and EOC personnel) to assess need and initiate actions such as a State Disaster Declaration or requesting Fire Management Assistance Grant funding (FMAG), as well as discussing mutual aid and cost share agreements.

- Determine jurisdiction(s)
- Is the fire a threat to public lands or a threat to private property? Yes/No
Request mutual aid if needed. Time period in this situation under mutual aid is 24 hours.
- Is the fire currently burning on more than one jurisdiction or likely to move beyond jurisdictional boundaries? Yes/No
- Has a Unified Command been established? Yes/No
 - If no Unified Command, who is IC and has this been relayed to all resources on the fire?
 - Are all resources on the fire accounted for and in radio communication?
- Will the fire be controlled within the 24 hours? Yes/No
- IC should keep accurate records tracking resource(s) time on scene, resources ordered, and number of personnel on the incident.
- For federal ICs contact the appropriate Forest or BLM Duty Officer and dispatch to advise them of fire status and estimated control time. Determine if there is a need to start discussions related to cost share agreements. Notify agency Fire Business Specialist.
- For city or county ICs contact their appropriate elected official or designee to advise them of fire status and estimated control time. Determine if there is a need to start discussions related to State Disaster Declaration, FMAG and cost share agreements. Determine if there is a need to contact the Bureau of Homeland Security-Area Field Coordinator to initiate/request State or FMAG funding. The Area Field Coordinator could provide additional direction or answer any questions related to State or FMAG funding opportunities. Remember to be eligible for FMAG funding the wildfire must be actively spreading with smoke in the air.
- Determine if fire will be going extended attack and ensure a delegation of authority has been prepared for the unified incident commanders if needed.
- Remember all aircraft requested for use on non-federal land will be billable to the requesting party.

Appendix E – Initial Attack Fire Size-Up

2024 Initial Attack Incident Organizer											
Call Into Dispatch Immediately											
Fire Name:					I.C. Name:						
Descriptive Location:											
Coordinate WGS84 hddd° mm.mmm'		Latitude:			Longitude:			Elevation:			
Cause:		Human			Natural			Unknown			
Ownership:		BLM		FS		BIA		FWS		Other:	
Estimated Size: Acres			Percent Active Perimeter:%			Structures Threatened? YES NO (Explain)					
Spread Potential:		Low			Moderate			High		Extreme	
Character of Fire:		Smoldering		Creeping		Running		Torching		Crowning	Spotting
		Erratic (Explain):									
Fuel Type:		Grass		Brush		Juniper		Timber		Other:	
Wind speed:											
Wind Direction:		S	SW	W	NW	N	NE	E	SE	Calm	
Are Other Resources Needed? YESNO					Does the Fire Constitute Any Control Problems? YESNO(Explain) Terrain, WUI, interstate						
Call Into Dispatch As Soon as You Can											
Resources Needed / Number of Each	Engines, Type 4 { }		Dozer { }			Soft Track { }		Hand crew, IHC { }		Air Tanker, Heavy { }	
	Engines, Type 6 { }		Task Force Leader { }			Strike Team Leader { }		Hand crew, T2 IA { }		SEAT { }	
	Engines, Structure { }		ICT3 1	OPS		DIVS { }		Hand crew, T2 { }		Helicopter, T1 { }	
	Water Tender { }		Safety	EMTF or EMPF		Staging Mgr.		Air Attack Platform		Helicopter, T2 / T3 { }	
Hazards: WUI Power Lines Steep Terrain Interstate/Highway Excessive Snags Other Rocky terrain (list):											
Fire Investigator Needed: YESNO			Name:				Temp:° F		RH:%		
Slope at Head of Fire:		0 – 15°			15 – 30°			30 – 45°		45°+	
Aspect:		S	SW	W	NW	N	NE	E	SE	Flat	
Position on Slope (If Applicable):		Rolling		Canyon Bottom		Lower 1/3		Middle 1/3		Upper 1/3	Ridge Top
Adjacent Fuel Type:		Grass		Brush		Juniper		Timber		Other:	
Arrival Date:Time:					Reported By:						
Estimated Containment Date:Time:					Estimated Control Date:Time:						
Directions to Fire:											
Get From Dispatch											
Incident Number:			Fire Code:				E.R.C.:		B.I.:		