



EASTERN IDAHO FIRE CHIEFS ASSOCIATION 2024 ANNUAL OPERATING PLAN

This document serves as an addendum to the Eastern Idaho Fire Chiefs (EIFCA) Association Constitution and Bylaws and the Eastern Idaho Fire Chiefs Mutual Aid Agreement and all who are party to the agreement within the Eastern Idaho area. In addition, all fire agencies within the boundary of the Eastern Idaho Fire Chiefs Association area, regardless of being party to any agreement, are invited to be participants to this Operating Plan.

This Operating Plan shall be prepared annually to update and define specific procedures and any changes that may arise while engaging “All-Hazard” incidents. All agencies, in good faith, will in their best efforts operate within the guidelines of this document.

The sole purpose of this document is to increase safety and coordination during interagency incidents and is the opinion of each entity party to this operating plan that following the guidelines of this document will: increase safety, enhance communications, establish minimum training qualifications, establish minimum personal protective equipment, and establish apparatus minimum standards.

This document in no way supersedes the federal “Annual Operating Plan for Mutual Fire Aid” or any other agreement between agencies, the Bureau of Land Management-Idaho Falls District and/or the Caribou-Targhee National Forest; but is to be used as a guidance document for operations. All agencies are to operate under their signed mutual aid agreements and use this document as an operating plan.

This Operating Plan is for “All-Hazard” incidents, however, due to the frequency and potential magnitude of wildland fires, heavy emphasis is placed on wildland fire operations.

Table of Contents

MINIMUM QUALIFICATION STANDARDS..... 3

MINIMUM PERSONAL PROTECTIVE EQUIPMENT REQUIREMENTS..... 4

MINIMUM EQUIPMENT REQUIREMENTS..... 5

EIFCA COMMUNICATIONS PLAN..... 7

EIFCA/MUTUAL AID FIRE CALL-OUT PROCEDURES..... 8

MUTUAL AID REQUEST FORM - 2024 9

Appendix A – EIFCA 700 Channel Plan..... 10

Appendix B – Federal Agency Frequency Plan..... 11

Appendix C – Dispatch Information..... 13

Appendix D – EIFCA Incident Management Considerations..... 14

Appendix E – Initial Attack Fire Size-Up..... 15

MINIMUM QUALIFICATION STANDARDS

Training and Qualifications: It is recognized and agreed upon that the ultimate goal of EIFCA is that all agencies work toward meeting the training and qualification requirements and standards set forth by the International Fire Service Accreditation Congress (IFSAC), the National Wildfire Coordinating Group (NWCG and PMS 310-1) and the Idaho Bureau of EMS. All responders should also complete ICS-100 and IS-700 for familiarization with the Incident Command System.

Structural Fire Training and Qualifications: The goal of EIFCA is to have all agencies meet the training and qualification standards set forth by the State of Idaho, or the equivalent, with Structural Firefighter I and HazMat Operations as a minimum. Firefighters are to complete the Arduous Work Capacity Test (the Pack Test) or Physical Agility Test equivalent to the Combat Challenge.

Wildland Fire Training and Qualifications: The goal of EIFCA is to have all agencies meet the training and qualification requirements and standards set forth by NWCG and PMS 310-1. As a minimum, S-130, S-190 and L-180 are to be obtained for each firefighter as well as completing the Arduous Work Capacity Test (the Pack Test).

Emergency Medical Services: All agencies providing Emergency Medical Services to an incident will ensure they are current in licensure with the Idaho Bureau of EMS and operating at a level commensurate with their level of training and licensure.

Response Qualification Expectation: Once declared a “Mutual Aid Incident,” a unified command structure will be set up for the management of the incident. During the initial attack phase of the operation, all agencies, (federal, state, local and tribal) will accept each other’s standards with regards to training and qualifications. *(For the purposes of this agreement, initial attack is generally defined as the first operational period when mutual aid may typically occur.)* Once jurisdiction is clearly established and the incident extends beyond initial attack, the standards of the agency(s) with jurisdiction will prevail. Any agency not meeting required standards for training and qualifications of the jurisdictional agency beyond the initial attack phase of the incident will be released from the incident or reassigned to other duties commensurate with their training and qualifications. Personnel from agencies that do not prescribe to the above standards may be used at the Incident Commander’s discretion. In all instances, Incident Commanders must ensure that all personnel and equipment resources are only assigned to duties commensurate with their competencies, agency qualifications, and equipment capabilities. Personnel must let the Incident Commander know if they are not qualified or do not have the experience to safely carry out an assignment. Safety is our first priority.

MINIMUM PERSONAL PROTECTIVE EQUIPMENT REQUIREMENTS

Personal Protective Equipment (PPE): All responders will wear appropriate PPE for the assignments which they accept. This includes EMS, wildland fire, structural fire and HazMat. For wildland fire, this includes fire-resistant pants and shirt, hard hat with chin strap, leather gloves, fire shelter and leather boots. Chaps, and hearing and eye protection are also recommended as needed. Personnel not properly equipped with appropriate PPE will be released from engagement and will be reassigned to other support functions or released from the incident.

MINIMUM EQUIPMENT REQUIREMENTS

Engine Typing and Equipment Standards: EIFCA agencies will, to the best of their ability, equip their apparatus according to the Idaho Surveying and Rating Bureau, IFSAC, Idaho Bureau of EMS and NWCG recommendations and standards. Agencies will “Type” their equipment according to FEMA and NWCG standards. Minimum standards for personnel, equipment, and capacities will be met consistent with the typing charts located in the Interagency Standards for Fire and Fire Aviation Operations (Red Book) listed below. Resources are to be self-sufficient for 24 hours, i.e., MREs, drinking water, etc.

Engine Type <i>Components</i>	Structure		Wildland Engines				
	<i>1</i>	<i>2</i>	<i>3</i>	<i>4</i>	<i>5</i>	<i>6</i>	<i>7</i>
Tank Minimum Capacity (gal)	300	300	500	750	400	150	50
Pump Minimum Flow (GPM)	1000	500	150	50	50	50	10
@ Rated Pressure (PSI)	150	150	250	100	100	100	100
Hose 2½”	1200	1000	-	-	-	-	-
Hose 1½”	500	500	1000	300	300	300	-
Hose 1”	-	-	500	300	300	300	200
Ladders (per NFPA 1901)	Yes	Yes	-	-	-	-	-
Master Stream 500 GPM (minimum)	Yes	-	-	-	-	-	-
Pump and Roll	-	-	Yes	Yes	Yes	Yes	Yes
Maximum GVWR (lbs.)	-	-	-	-	26,000	19,500	14,000
Personnel (NWCG minimum)	4	3	3	2	2	2	2

Water Tender Type <i>Requirements</i>	Support			Tactical	
	<i>S1</i>	<i>S2</i>	<i>S3</i>	<i>T1</i>	<i>T2</i>
Tank Capacity (gal)	4000	2500	1000	2000	1000
Pump Minimum Flow (GPM)	300	200	200	250	250
@Rated Pressure (PSI)	50	50	50	150	150
Maximum Refill Time (mins)	30	20	15	-	-
Pump and Roll	-	-	-	Yes	Yes
Personnel (min)	1	1	1	2	2

Additionally, all EIFCA agencies will attempt to equip their wildland engines and apparatus consistent with the recommended engine equipment list as recommended by IDL (listed below). This will provide standardization regarding hose size, threads, and fittings.

Category	Item Description	NFES #	Type	
			3, 4, & 5	6
<i>Fire Tools & Equip</i>	McLeod	0296		1
	Combination Tool	1180	1	1
	Shovel	0171	3	2
	Pulaski	0146	3	2
	Backpack Pump	1149	3	2
	Fusees (case)	0105	1	½
	Foam, concentrate, Class A (5-gallon)	1145	1	1
	Chainsaw (and chaps)		1	1
	Chainsaw Tool Kit	0342	1	1
	Drip Torch	0241	2	1
	Portable Pump		*	*
<i>Medical</i>	First Aid Kit, 10-person	1143	1	1
	Burn Kit		1	1
	Body Fluids Barrier Kit	0640	1	1
<i>General Supplies</i>	Flashlight, general service	0069	1	1
	Chock Blocks		1	1
	Tow Chain or Cable	1856	1	1
	Jack, hydraulic (comply w/GVW)		1	1
	Lug Wrench		1	1
	Pliers, fence		1	1
	Food (48-hour supply)	1842	1	1
	Rags	3309	*	*
	Rope/Cord (feet)		50	50
	Sheeting, plastic, 10' x 20'	1287	1	1
	Tape, duct	0071	1	1
	Tape, filament (roll)	0222	2	2
	Water (gallon/person) minimum		2	2
	Bolt Cutters		1	1
	<i>General Supplies</i>	Toilet Paper (roll)	0142	*
Cooler or Ice Chest		0557	*	*
Hand Primer, Mark III		0145	*	*
Hose Clamp		0046	2	1
Gaskets (set)			1	1
Pail, collapsible		0141	1	1
Hose Reel Crank			*	*

EIFCA COMMUNICATIONS PLAN

Purpose: Ensure interagency communications during non-routine multi-agency incidents

Responsibilities: Dispatcher, Command, Responders

Guidance: Each County that uses 700 MHz radios will program into their 700 radios the “EIFCA 700 Channel Plan” as outlined in Appendix A in this document. There will be an “Upper Valley North Plan” (Idaho Falls & North – Radio Zones G, H, Q, R, S, T, U, V, Y) that primarily uses the “Upper Valley Tait Radio System” and there will be a “Shelley & South + Teton Plan” (Shelley & South + Teton – Radio Zone I, T, W) that will primarily use the State Motorola System. Please note that since Teton is in the Upper Valley but on the State Motorola System, they have two zones, T and W, that can be used.

For agencies with VHF radio ability, the “Eastern Idaho Interagency Fire Center Initial Attack Plan” (EIIFC) will be used. This is Group 19 in the EIIFC plan as outlined in Appendix B. Other VHF needs will need to be coordinated between commonly used mutual aid agencies.

During a multi-agency response, the responsible dispatch, along with the IC, will determine which Zone and Channels will be used on that incident. The requesting dispatch will notify all agencies currently on the incident or responding to the incident of the radio zone and channels being used for the incident. All agencies will report to command or staging via the assigned channel.

When requesting mutual aid resources from other EIFCA agencies, the requesting dispatch will provide the assisting agency with: incident nature, resource request, Incident Command Post and Staging area location(s) and the radio zone and channel(s) the incident is operating on. Responding agencies will provide the requesting dispatch an estimated time of arrival.

Apparatus Identification/Naming Convention: To standardize the identification of apparatus, the following five-character unit identifier should be used:

Example: Teton E611 (Pronounced: Teton E Six Eleven)

First Identifier: Name of Department (Teton)
Second Identifier: Engine, Tender etc. (E-Engine)
Third Identifier: Typing of apparatus (1-7) (Type 6)
Fourth Identifier: Station Number (Station One)
Fifth Identifier: Number of that type of apparatus at that station (First Engine of that type at that station)

A four-character unit identifier can also be used. The second number becomes the number of that type of apparatus. No station number is used. Example: Teton E62 = Type 6 engine and the second one of its type.

EIFCA/MUTUAL AID FIRE CALL-OUT PROCEDURES

WHEN ANY EIFCA AGENCY RECEIVES A SMOKE REPORT NEAR ANY JURISDICTIONAL BOUNDARIES BETWEEN AGENCIES AND RESOURCES ARE SENT, THE RESPECTIVE DISPATCH CENTERS WILL BE CONTACTED WITH THE LOCATION OF THE REPORT AND RESOURCES THAT WERE SENT.

Upon confirmation of a wildland fire, the Incident Commander or initial responding units will decide if further assistance is needed from EIFCA agencies. In general, err on the side of caution and order adequate resources to ensure prompt control and suppression of wildfires. If a mutual aid fire is declared the following steps will be taken:

1. A mutual aid fire is declared by the Incident Commander of an incident by calling their respective dispatch center with an estimate of resource needs by resource type and total numbers needed by type.
2. The Incident Commander will designate a Staging Area and Staging Area Manager for all incoming resources to report to for check-in, briefing and assignment prior to engaging the fire. Depending on the situation, the Incident Command Post and Staging area may be in the same or different locations.
3. Madison County Dispatch (208) 372-5001 is the primary dispatch to contact for mutual aid requests IF your dispatch needs assistance. Jefferson County Dispatch (208) 745-6090 will be a backup to Madison. The following information will need to be exchanged:
 - a. Incident Name
 - b. Incident Commander
 - c. Staging area location and contact
 - d. Frequency to be used
 - e. Number and type of resources that the IC is requesting (are additional Overhead needed to manage ordered resources?)
 - f. Identify best route to staging area
 - g. If needed, identify a time to meet in the staging area
 - h. Notify the requested resource if they will be performing Initial Attack
4. Resources are most efficiently ordered by using the traditional means of paging the resource out through the approved dispatching procedures of each entity. Calling neighboring Chiefs one at a time is not efficient and is not recommended.
5. The responsible dispatch center will confirm with the Incident Commander the number and type of resources en route from each unit and their ETAs to the incident staging area.
6. If the fire is entirely within the jurisdiction of one agency, that agency will retain overall command of the incident. However, due to communications issues with different frequency bands being used between agencies, mutual aid fires are managed similar to a unified command situation. A command representative of each agency involved may need to remain at ICP or travel together to maintain communications between all agencies and resources.
7. See Appendix D for additional incident considerations.



**EASTERN IDAHO FIRE CHIEFS ASSOCIATION
MUTUAL AID REQUEST FORM - 2024**

Madison Dispatch: (208) 372-5001 (Primary EIFCA Dispatch)
Jefferson Dispatch: (208) 612-6090 (Secondary EIFCA Dispatch)

Incident Information	
Incident Name:	Incident Commander:
Staging Area Address/Location:	
Staging Area Contact Name and Number:	
Time needed:	
Command 700 Zone & Channel:	Tactical 700 Zone & Channel:
Command VHF Frequency:	Tactical VHF Frequency:
Initial Attack? Yes or No	Land Ownership: Private or Federal

Rapid Resource Request					
Task Force of Wildland Engines			Task Force of Structure Engines		
Type	Filled By	ETA Staging	Type	Filled By	ETA Staging
Eng # _____			Eng # _____		
Eng # _____			Eng # _____		
Eng # _____			Eng # _____		
Eng # _____			Eng # _____		
Eng # _____			Eng # _____		
Water Tender			Water Tender		
Overhead			Overhead		
Name/Cell:			Name/Cell:		
Overhead			Overhead		
Name/Cell:			Name/Cell:		

Overhead = Leadership

Rapid Resource Request - Other					
Task Force of Law Enforcement Officers			Other: EMS, Ladder Truck, Light Tower, etc.		
Type	Filled By	ETA Staging	Type	Filled By	ETA Staging
LEO					
LEO					
LEO					
LEO					
LEO					
Overhead			Overhead		
Name/Cell:			Name/Cell:		
Overhead			Overhead		
Name/Cell:			Name/Cell:		

Appendix A – EIFCA 700 Channel Plan

Upper Valley North Plan: Zones G, H, Q, R, S, T, U, V, Y

Shelley & South + Teton Plan: Zones I, T, W

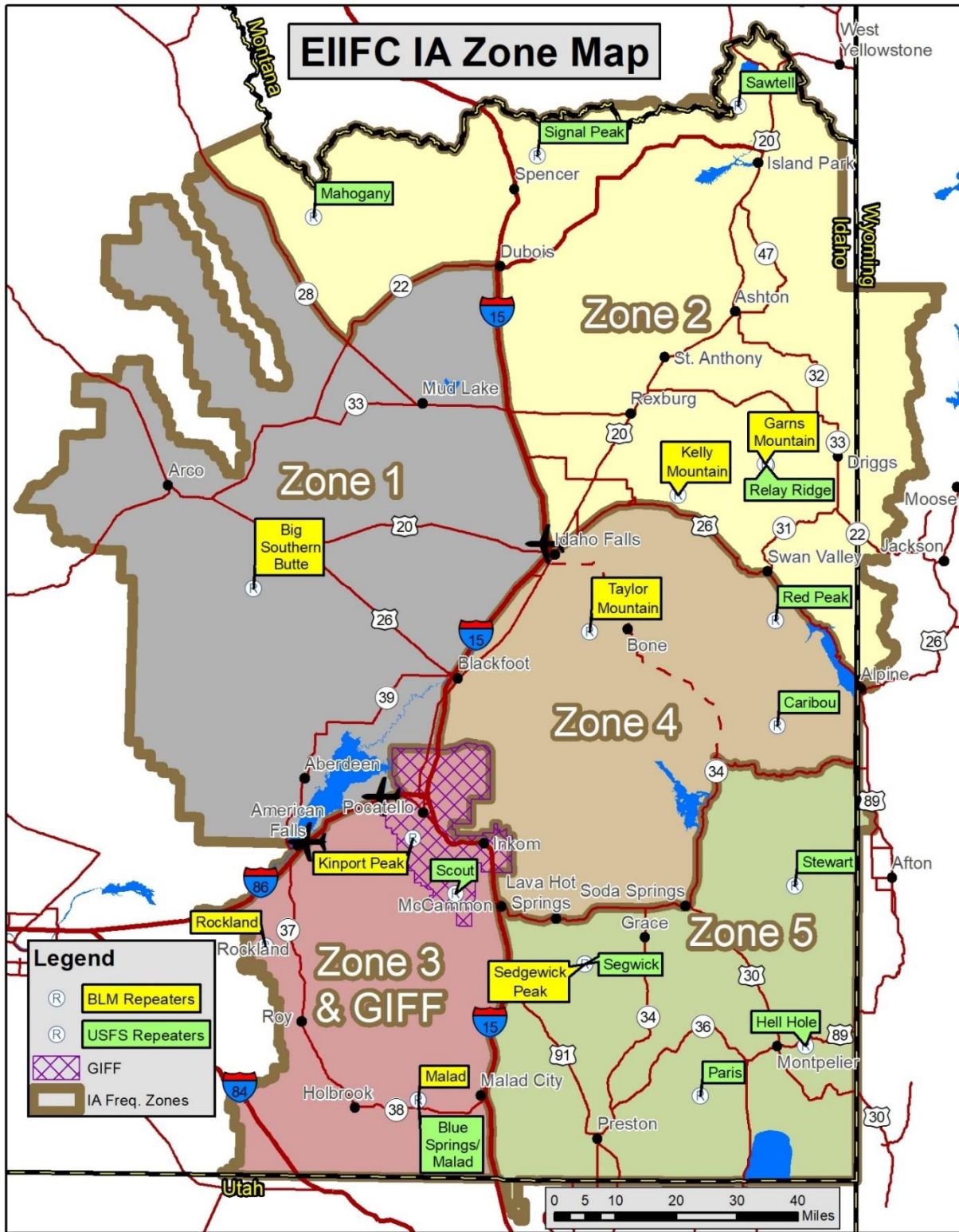
Technical Data for each zone can be obtained from: Teton Communications, 208-522-0750

Eastern Idaho Fire Chiefs Association 700 Channel Plan 5-29-24

ICS Dist. 6	DIGB 6	Reg 3/DIGB 5	State Freqs	ID Event	ID Regional	ID Regional	ID Regional	NIFOG Freq
Zone G	Zone H	Zone I	Zone J	Zone K	Zone L	Zone M	Zone N	Zone O
G11M-Flre	H1 1M-Flre	I1 1M-Flre	J1 1J ICS-Cmd	K1 Id-Evnt1	L1 1A-Reg	M1 5C-Reg	N1 1M-Reg	O1 7-Cal50r
G2 D6-GOLD	H2 D6-F E1	I2 R3-Reg 1	J2 ICS-Ops	K2 Id-Evnt2	L2 2A-Reg	M2 6C-Reg	N2 2M-Reg	O2 7-Cal50d
G3 D6-EM5	H3 D6-Fd1	I3 R3-Reg2	J3 ICS-Plan	K3 Id-Evnt3	L3 1B-Reg	M3 7C-Reg	N3 1N-Reg	O3 7-Tac51r
G4 D6-SAR	H4 D6-F E2	I4 R3-Reg3	J4 ICS-Log	K4 Id-Evnt4	L4 2B-Reg	M4 1E-Reg	N4 1O-Reg	O4 7-Tac51d
G5 D6-BLM	H5 D6-Fd2	I5 R3-Reg4	J5 ICS-Fnc	K5 Id-Evnt5	L5 3B-Reg	M5 1F-Reg	N5 2O-Reg	O5 7-Tac52r
G6 D6-U5F5	H6 D6-F E3	I6 R3-Reg5	J6 ICS-Sfty	K6 Id-Evnt6	L6 4B-Reg	M6 2F-Reg	N6 1P-Reg	O6 7-Tac52d
G7 D6-F&G	H7 D6-Fd3	I7 R3-Reg6	J7 Hosp-AC	K7 Id-Evnt7	L7 5B-Reg	M7 1G-Reg	N7 2P-Reg	O7 7-Tac53r
G8 D6-BDR	H8 D6-L E1	I8 R3-Reg7	J8 EMS-AC	K8 Id-Evnt8	L8 6B-Reg	M8 2G-Reg	N8 1S-Reg	O8 7-Tac53d
G9 D6-INL-F	H9 D6-Ld1	I9 R3-Reg8	J9 Id-Air-1	K9 Id-Evnt9	L9 7B-Reg	M9 1I-Reg	N9 1T-Reg	O9 7-Cal70r
G10-Future	H10 8-Cal90d	I10 R3-Reg9	J10 Id-Air-2	K10 Id-Evnt10	L10 8B-Reg	M10 1J-Reg	N10 2T-Reg	O10 7-Cal70d
G11 D6-VAC	H11 7-Cal50d	I11 R3-Reg10	J11 Id-Air-3	K11 Id-Evnt11	L11 9B-Reg	M11 2J-Reg	N11 1V-Reg	O11 7-Tac71r
G12 Future	H12 D6-LE2	I12 R3-Reg 11	J12	K12 Id-Evnt12	L12 10B-Reg	M12 1K-Reg	N12 1W-Reg	O12 7-Tac71d
G13 Future	H13 D6-Ld2	I13 R3-Reg 12	J13	K13 Id-Evnt13	L13 1C-Reg	M13 1L-Reg	N13 5B-Reg	O13 7-Tac72r
G14 Future	H14 D6-LE3	I14 R3-Reg13	J14	K14 Id-Evnt14	L14 2C-Reg	M14 2L-Reg	N14 NP-Reg	O14 7-Tac72d
G15 Future	H15 D6-Ld3	I15 Re-Reg14	J15	K15 Id-Evnt15	L15 3C-Reg	M15 3L-Reg	N15 CD-Reg	O15 7-Tac73r
G16 1M-Flre	H16 1M-Flre	I16 1M-Flre	J16	K16 Id-Evnt16	L16 4C-Reg	M16 4L-Reg		O16 7-Tac73d

NIFOG Freq	Bonneville-8B	Jefferson-1J	Madison-1M	Teton-1T	Fremont-2F	Clark-5C	Shelley & South + Teton	INL
Zone P	Zone Q	Zone R	Zone S & C	Zone T	Zone U	Zone V	Zone W	Zone Y
P1 8-Cal90r	Q1 1M-Flre	R1 1M-Flre	S1 1M-Flre	T1 1M-Flre	U1 1M-Flre	V1 1M-Flre	W1 (K1) Id-Evnt1	Y1 1M-Flre
P2 8-Cal90d	Q2 8B-E1	R2 1J-E1	S2 1M-E1	T2 1T-LawT1	U2 2F-E1	V2 5C-E1	W2 (O10) 7-Cal70d	Y2 INL-E1
P3 8-Tac91r	Q3 8B-d1	R3 1J-d1	S3 1M-d1	T3 1T-EM51	U3 2F-d1	V3 5C-d1	W3 (K2) Id-Evnt2	Y3 INL-d1
P4 8-Tac91d	Q4 8B-E2	R4 1J-E2	S4 1M-E2	T4 1T-EmsT1	U4 2F-E2	V4 5C-E2	W4 (O4) 7-Tac51d	Y4 INL-E2
P5 8-Tac92r	Q5 8B-d2	R5 1J-d2	S5 1M-d2	T5 1T-FDcmd	U5 2F-d2	V5 5C-d2	W5 (K3) Id-Evnt3	Y5 INL-d2
P6 8-Tac92d	Q6 8B-E3	R6 1J-E3	S6 1M-E3	T6 1T-FireT1	U6 2F-E3	V6 5C-E3	W6 (O6) 7-Tac52d	Y6 INL-E3
P7 8-Tac93r	Q7 8B-d3	R7 1J-d3	S7 1M-d3	T7 1T-FireT2	U7 2F-d3	V7 5C-d3	W7 (K4) Id-Evnt4	Y7 INL-d3
P8 8-Tac93d	Q8 8B-E4	R8 1J-E4	S8 1M-E4	T8 1T-FireT3	U8 2F-E4	V8 5C-E4	W8 (O8) 7-Tac53d	Y8 INL-E4
P9 8-Tac94r	Q9 8B-d4	R9 1J-d4	S9 1M-d4	T9 1T-FireT4	U9 2F-d4	V9 5C-d4	W9 (K5) Id-Evnt5	Y9 INL-d4
P10 8-Tac94d	Q10 8-Cal90d	R10 8-Cal90d	S10 8-Cal90d	T10 8-Cal90	U10 8-Cal90d	V10 8-Cal90d	W10 (P2) 8-Cal90d	Y10 8-Cal90d
P11	Q11 7-Cal50d	R11 7-Cal50d	S11 7-Cal50d	T11 1T-OP51	U11 7-Cal50d	V11 7-Cal50d	W11 (O2) 7-Cal50d	Y11 7-Cal50d
P12	Q12 8B-E5	R12 1J-E5	S12 1M-E5	T12 1T-OP52	U12 2F-E5	V12 5C-E5	W12 (O12) 7-Tac71d	Y12 INL-E5
P13	Q13 8B-d5	R13 1J-d5	S13 1M-d5	T13 1T-OP53	U13 2F-d5	V13 5C-d5	W13 (K7) Id-Evnt7	Y13 INL-d5
P14	Q14 8B-E6	R14 1J-E6	S14 1M-E6	T14 1T-OP54	U14 2F-E6	V14 5C-E6	W14 (O14) 7-Tac72d	Y14 INL-E6
P15	Q15 8B-d6	R15 1J-d6	S15 1M-d6	T15 1T-REG	U15 2F-d6	V15 5C-d6	W15 (K8) Id-Evnt8	Y15 INL-d6
P16	Q16 1M-Flre	R16 1M-Flre	S16 1M-Flre	T16 1M-Flre	U16 1M-Flre	V16 1M-Flre	W16 (O16) 7-Tac73d	Y16 1M-Flre

Appendix B – Federal Agency Frequency Plan



Appendix B – continued

GROUP 19 – EIIFC IA					Tones: Set radio to desired command channel (CH 1 – 3) and press numbers 1 – 11 on keypad to enter desired repeater.		
CH	Label	Receive	Transmit	Transmit CG	BLM (Ch 1)	TAF (Ch 2)	CAF (Ch 3)
1	BLM CMD	169.7750	163.1500	100.0	Kinport	FS Portable 1	FS Portable 2
2	TAF CMD	170.5250	164.9875	107.2	Garns		Paris
3	CAF CMD	170.5500	164.9625	114.8	Big Butte/FF		Hells Hole
4	A/G 17	167.9875	167.9875	123.0	Taylor	Relay	Stewart
5	A/G 49	168.0375	168.0375	131.8	Sedgwick	Mahogany	Caribou
6	A/G IDL	151.1450	151.1450	141.3	Kelly	Spare	
7	FS TAC 1	167.3000	167.3000	151.4	Malad		
8	FS TAC 2	169.1750	169.1750	162.2	Rockland		
9	FS TAC 3	166.9875	166.9875	136.5		Signal	Scout
10	BLM TAC 1	172.7750	172.7750	146.2		Sawtell	Blue Springs
11	BLM TAC 3	168.6375	168.6375	167.9	Portable Rep	Red Peak	Sedgwick
12	BLM TAC 4	166.8000	166.8000				
13	LOGISTICS	163.1000	163.1000	For Flight Follow Transmit: Radio on CH 14 select tone 3 Transmit on local flight follow only in emergency.			
14	LOC FF	167.1500	163.1750				
15	EMS 2	155.2800	155.2800	156.7	For EMS 2: Radio on CH15 select tone 15 (EMS 2)		
16	AIR GUARD	168.6250	168.6250	110.9	For AIR GUARD: Radio on CH16 select tone 16		

Appendix C – Dispatch Information

See 'EIFCA Mutual Aid Mobilization 2024' Google Sheet

https://docs.google.com/spreadsheets/d/1TqXWw100_nojqfMWXmX8NxF8M9yu1qHb/edit?usp=sharing&oid=102037867924559567825&rtpof=true&sd=true

Appendix D – EIFCA Incident Management Considerations

The intent of this checklist will provide the Incident Commander (IC) information to be aware of during an emerging incident and when there may be a need for other personnel (Agency Administrators, City/County Elected Officials, Bureau of Homeland Security, Fire Business Specialist and EOC personnel) to assess need and initiate actions such as a State Disaster Declaration or requesting Fire Management Assistance Grant (FMAG) funding, as well as discussing mutual aid and cost share agreements.

- Determine jurisdiction(s)
- Is the fire a threat to public lands or a threat to private property? Yes/No
Request mutual aid if needed. Time period in this situation under mutual aid is 24 hours.
- Is the fire currently burning on more than one jurisdiction or likely to move beyond jurisdictional boundaries? Yes/No
- Has a Unified Command been established? Yes/No
 - If no Unified Command, who is IC and has this been relayed to all resources on the fire?
 - Are all resources on the fire accounted for and in radio communication?
- Will the fire be controlled within the 24 hours? Yes/No
- IC should keep accurate records tracking resource(s) time on scene, resources ordered, and number of personnel on the incident.
- For federal ICs contact the appropriate Forest or BLM Duty Officer and dispatch to advise them of fire status and estimated control time. Determine if there is a need to start discussions related to cost share agreements. Notify agency Fire Business Specialist.
- For city or county ICs contact their appropriate elected official or designee to advise them of fire status and estimated control time. Determine if there is a need to start discussions related to State Disaster Declaration, FMAG and cost share agreements. Determine if there is a need to contact the Bureau of Homeland Security-Area Field Coordinator to initiate/request State or FMAG funding. The Area Field Coordinator could provide additional direction or answer any questions related to State or FMAG funding opportunities. Remember to be eligible for FMAG funding the wildfire must be actively spreading with smoke in the air.
- Determine if fire will be going extended attack and ensure a delegation of authority has been prepared for the unified incident commanders if needed.
- Remember all aircraft requested for use on non-federal land will be billable to the requesting party.

Appendix E – Initial Attack Fire Size-Up

2024 Initial Attack Incident Organizer										
Call Into Dispatch Immediately										
Fire Name:					I.C. Name:					
Descriptive Location:										
Coordinate WGS84 hddd° mm.mmm'		Latitude:			Longitude:			Elevation:		
Cause:		Human			Natural			Unknown		
Ownership:	BLM		FS		BIA		FWS		Other:	
Estimated Size: Acres			Percent Active Perimeter:%			Structures Threatened? YES NO (Explain)				
Spread Potential:		Low		Moderate			High		Extreme	
Character of Fire:	Smoldering	Creeping		Running		Torching		Crowning	Spotting	
	Erratic (Explain):									
Fuel Type:	Grass		Brush		Juniper		Timber		Other:	
Wind speed:										
Wind Direction:	S	SW	W	NW	N	NE	E	SE	Calm	
Are Other Resources Needed? YES NO				Does the Fire Constitute Any Control Problems? YES NO (Explain) Terrain, WUI, interstate						
Call Into Dispatch As Soon as You Can										
Resources Needed / Number of Each	Engines, Type 4 { }		Dozer { }		Soft Track { }		Hand crew, IHC { }		Air Tanker, Heavy { }	
	Engines, Type 6 { }		Task Force Leader { }		Strike Team Leader { }		Hand crew, T2 IA { }		SEAT { }	
	Engines, Structure { }	ICT3 1	OPS		DIVS { }		Hand crew, T2 { }		Helicopter, T1 { }	
	Water Tender { }		Safety	EMTF or EMPF		Staging Mgr.	Air Attack Platform		Helicopter, T2 / T3 { }	
Hazards: WUI Power Lines Steep Terrain Interstate/Highway Excessive Snags Other Rocky terrain (list): _____										
Fire Investigator Needed: YES NO			Name:				Temp: ° F		RH: %	
Slope at Head of Fire:	0 – 15°			15 – 30°		30 – 45°		45°+		
Aspect:	S	SW	W	NW	N	NE	E	SE	Flat	
Position on Slope (If Applicable):	Rolling		Canyon Bottom		Lower 1/3		Middle 1/3		Upper 1/3	Ridge Top
Adjacent Fuel Type:	Grass		Brush		Juniper		Timber		Other:	
Arrival Date: Time:					Reported By:					
Estimated Containment Date: Time:					Estimated Control Date: Time:					
Directions to Fire:										
Get From Dispatch										
Incident Number:			Fire Code:				E.R.C.:		B.I.:	